



KRISTALL BATH SUITE FROM ACRYLIL/STERNHAGEN

A futuristic one stop sanitary ware collection comprises highlighter tiles, wall hung WC, SaniQ Wash basin and Shower/Diverter. The wall-hung WC comes with water saving and rimless flushing technology, soft-close cover and high quality take off hinges.

Price: Wall-hung WC: ₹60,400 – ₹1,42,000

SaniQ Wash basin: ₹53,200 – ₹62,900

Kristall Tiles: ₹820 – ₹1050

Shower/Diverter: ₹28,300 – ₹2,20,900

NXT RANGE FROM KOHLER

With a seamless exterior, easier waste disposal, this toilet range available in three variations has an unparalleled flushing technology, where the rim guides the water jets to create a high velocity stream hitting the bowl at high pressure. The waste matter slides out of sight even before flushing.



Price: Replay Wall-Hung

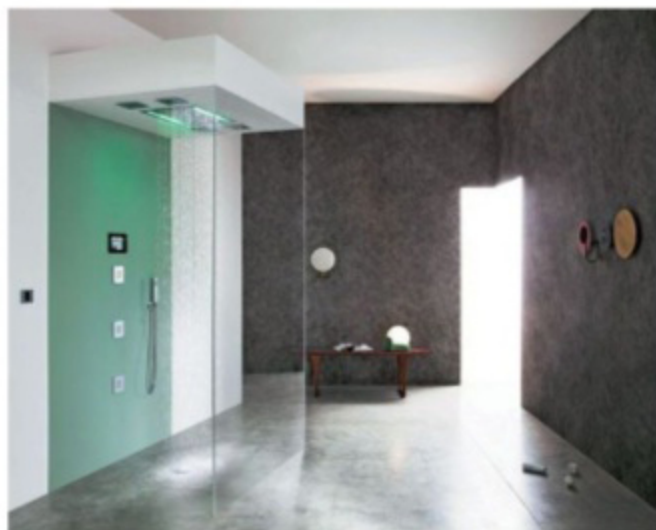
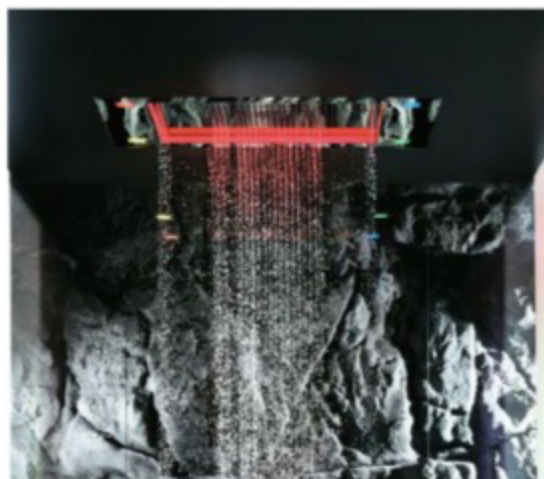
Toilet: ₹18,000

Freelance Wall-Hung Toilet: ₹21,000

Forefront Wall-Hung Toilet: ₹28,000

SENSORY SKY FROM DORNBRACHT

This shower system with different rain modes, mist, light and fragrances turns showering into a unique experience. The extensive, flat rain panel has separate nozzle arrays for the overhead spray, body spray and rain curtain, as well as a cold water mist nozzle and light and fragrance functions. In addition the sprays, nozzles, light and fragrances can also be activated separately and independently for an individual shower experience.



AQUA-SENSE FROM GRAFF

This shower system inspired by what one experiences at Spas, has several features including an electronic system controlled by a touch screen, ceiling-mounted shower-head with rain, heavy rain and waterfall effects, RGB lighting that changes colour, 4 ceiling-mounted speakers, adjustable side body sprays. Music can be easily uploaded using an i-Pod connected to a wall-mounted USB port.

MULTIFUNCTIONAL BATHTUB FROM JOHNSON BATHROOMS

This stylish cosy corner bathtub has several features like bubble function, computerized function with a control panel, inbuilt 1HP Jacuzzi Effect Pump and FM Radio.

Dimension :
1570 x 1540 x
660 mm



HOT TRENDS IN 2017 - INDUSTRY PREDICTIONS

Pau Abello Pellicer, Managing Director, Roca Bathroom Products

Elegant suave and highly functional smart bathrooms are the way forward. The key market trend will be smart toilets with night lights, heated seat with adjustable temperature, auto open and auto close, remote control, auto flush system, different nozzle positions for male/female, water temperature and pressure adjustment, etc.

Ashok Goyal, Chief Executive Officer, Nitco

HD Digital printed tiles for all the rooms including washrooms will lead the innovation pack. With its ever evolving technique, digital tile printing is set to explore different finishes, realistic images and vibrant colour pallets.

Akshat Bhatt, Principal Architect, Architecture Discipline

In the coming years, I see the emergence of wallpapers and non-permanent textures in residential washroom spaces. People want their washrooms to feel large, which is not always possible. The relationship with the living space i.e. the bedroom is critical and I wish to see some evolution and maturity in the coming years

Parind Sarmalkar, Sales & Marketing Director - Dornbracht India

With health, wellbeing and individualisation trends, the focus is turning to personal needs and efficiency. In the future, these influences will call for an intelligent form of presentation of water -one that can meet different needs at the touch of a button, while conveniently simplifying and tailoring the applications selected. Digital transformation, complex technologies will open up new possibilities and opportunities.

Emanuela Tavolini, Director of Sales -Europe, Graff

There will be an increase in the demand for shower products that can recreate a small Spa both in residences and in the hospitality sector. To stimulate and satisfy the consumers senses, shower systems will provide music, shades of lights, mist and several combinations of water jets at all body heights. Technology combined with aesthetics will make it all possible.

CONSUMER CHOICES

**Emanuela Tavolini,
Director of Sales -Europe, Graff**

For consumers the bathroom is no longer just a washroom, but an area for wellness and relaxation. The ideal bathroom is more spacious and includes features and design elements that characterize other rooms in the house. There is more demand for well designed faucets, as they are perceived as architectural elements and not just functional items. Both in the residential and hospitality sector users expect the shower systems to offer more functionality and transform the "shower act" into a special moment.



Ametis Ring, a dual-function shower head that allows users to switch between rain and waterfall settings, uses a full-spectrum LED RGB colour therapy lighting system.

Photo courtesy: Graff