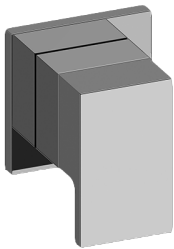


G-8071-LM31E1-T
Solar Collection
Solar M-Series 2-Way Diverter Valve Trim
with Handle



Product Features

- Single metal handle and decorative trim plate
- Use with G-8052 2-Way Diverter Volume Control Valve WITH Off Function and Pass-Through

Code compliance

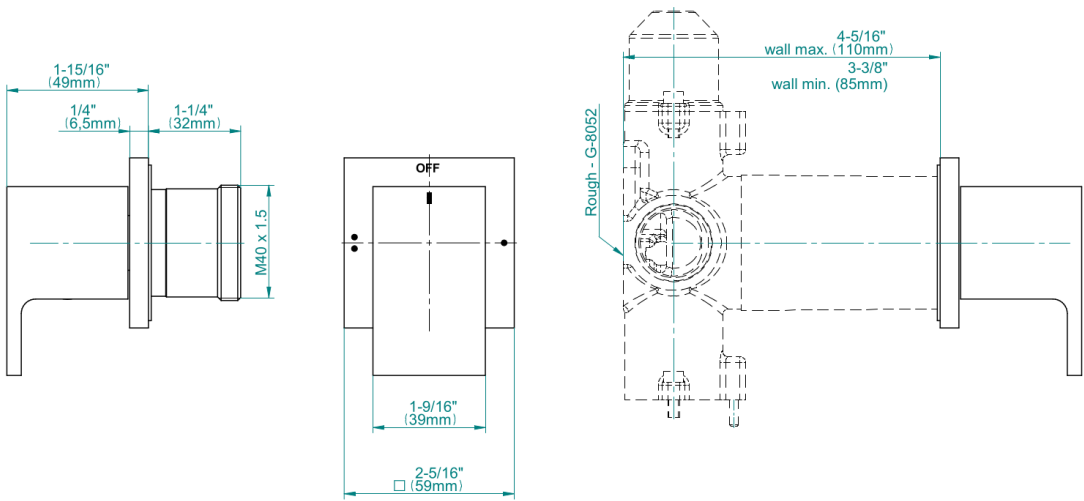
- ADA

Available Finishes

- 24K Polished Gold
- 24K Brushed Gold
- Architectural Black™
- Matte Black
- Polished Chrome
- Polished Nickel
- Steelnox® (Satin Nickel)
- Architectural White

* Special order finish - call for availability

SOLAR Series



CUTTING EDGE DESIGN