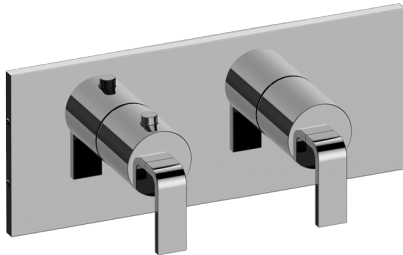


Immersion Collection

Immersion M-Series Valve Horizontal Trim with Two Handles



- Two metal handles, decorative trim plate
- Use with M-Series rough valves

- ADA

- 24K Polished Gold
- 24K Brushed Gold
- Architectural Black™
- Matte Black
- Polished Chrome
- Polished Nickel
- Steelnox® (Satin Nickel)
- Architectural White

Technical drawing of the G-8076 roughing plate, showing dimensions in inches and millimeters.

Top View:

- Overall width: 9-11/16" (246mm)
- Overall height: 3-15/16" (100mm)
- Distance between mounting holes: 3-15/16" (100mm)
- Distance from top edge to mounting hole center: 2-7/8" (73mm)
- Mounting hole diameter: \varnothing 1-9/16" (40mm)
- Mounting hole offset from centerline: 11/16" (18mm)
- Mounting hole thread: M40 x 1.5
- Mounting hole depth: 1-1/4" (32mm)
- Mounting hole material: M4

Front View:

- Overall width: 9-11/16" (246mm)
- Overall height: 3-15/16" (100mm)
- Distance between mounting holes: 3-15/16" (100mm)
- Distance from top edge to mounting hole center: 2-7/8" (73mm)
- Mounting hole diameter: \varnothing 1-9/16" (40mm)
- Mounting hole offset from centerline: 11/16" (18mm)
- Mounting hole thread: M40 x 1.5
- Mounting hole depth: 1-1/4" (32mm)
- Mounting hole material: M4

Side View:

- Overall width: 9-11/16" (246mm)
- Overall height: 3-15/16" (100mm)
- Distance between mounting holes: 3-15/16" (100mm)
- Distance from top edge to mounting hole center: 2-7/8" (73mm)
- Mounting hole diameter: \varnothing 1-9/16" (40mm)
- Mounting hole offset from centerline: 11/16" (18mm)
- Mounting hole thread: M40 x 1.5
- Mounting hole depth: 1-1/4" (32mm)
- Mounting hole material: M4

Bottom View:

- Overall width: 9-11/16" (246mm)
- Overall height: 3-15/16" (100mm)
- Distance between mounting holes: 3-15/16" (100mm)
- Distance from top edge to mounting hole center: 2-7/8" (73mm)
- Mounting hole diameter: \varnothing 1-9/16" (40mm)
- Mounting hole offset from centerline: 11/16" (18mm)
- Mounting hole thread: M40 x 1.5
- Mounting hole depth: 1-1/4" (32mm)
- Mounting hole material: M4

Labels:

- Rough - G-8076
- Rough - G-8052 or G-8053

GRAFF®