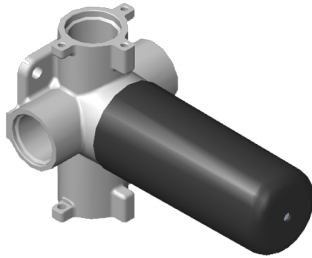


## G-8053S

Three-Way Shared Function Diverter  
Control Valve WITHOUT Off Function (No  
Pass-Through)

# GRAFF®



### Product Features

- ~11 gpm @ 60 psi
- 3/4" universal inlets/outlets with female threads
- Operates one function separately or two functions together
- Recommended to use with G-8077 Stop/Volume Control Valve
- Stacking inlet feature
- Supplied with protective plastic cover

### Available Finishes

\* Special order finish - call for availability

